

easicook.co.uk

Spare Parts Manual

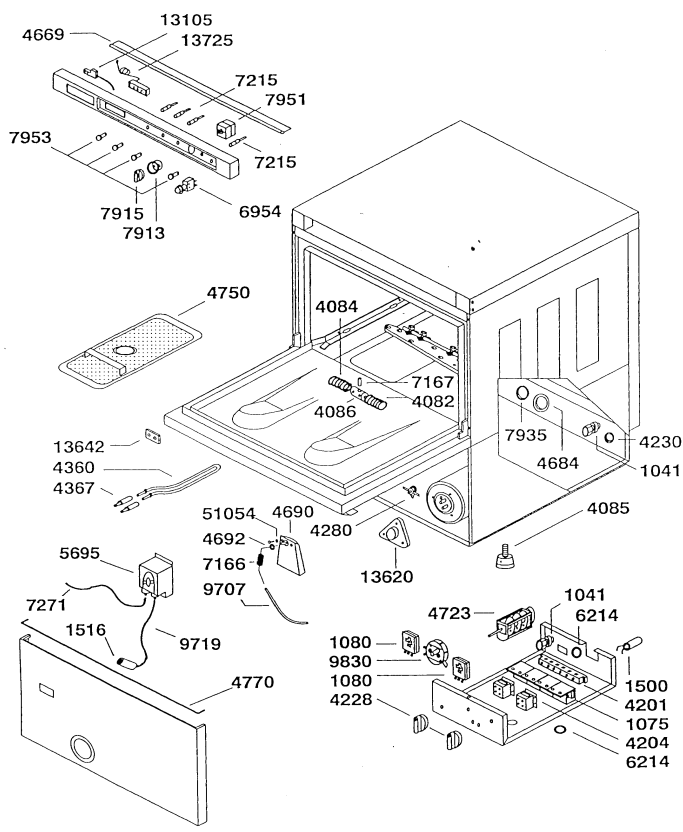
**Leading UK Distributors
of Catering Equipment Since 1977**

Sales - Repairs - Spares

Tel: 029 20747567

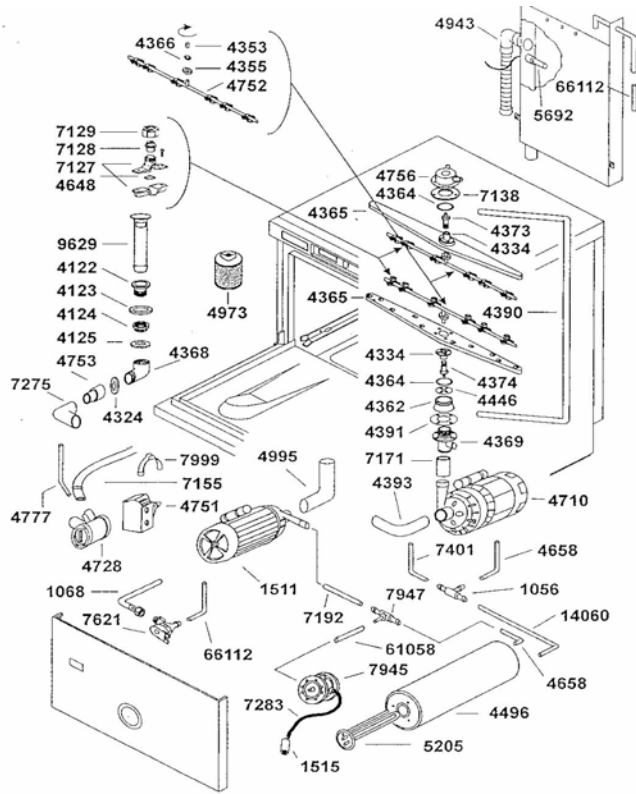
Fax: 029 20214100


Email: info@easicook.co.uk



Parts No.	Description
1041	Fairlead with Threaded Ring
1075	Relay B1/2/220 Alternate Current
1080	Thermostat Unit 90 Degrees C
1500	Anti-noise Filter
1516	Detergent Filter
4082	Door Shut Right Spring
4084	Door Shut Left Spring
4085	Foot 60x40x10MA
4086	Spring Stretcher D 22mm
4201	Terminal Block
4204	Remote Control Switch
4228	Knob Thermostat/Timer
4230	Cable Bushing
4280	Contact Thermostat
4360	Heating Element 2000W
4367	Rubber Cover
4669	Door Gasket AF
4684	Fairlead D-65
4690 now 9698	Pressure Accumulator of Level Control
4692	O.R. Gasket
4723	Timer
4750	Surface Filter
4770	Drip Sealing
5695	Detergent Dispenser/Pump
5696 not shown	Plastic Tube (Detergent Pump Internal)
5697 not shown	Peristaltic Roller Assembly (pump wheel)
6214	Cable Fairlead D18
6954	Start Push Button
7166	Spring of Level Control Hose
7167	Elastic Pin 3 x 22
7215	Neon Warning Lamp
7271	Delivery Hose
7913	Switch Support
7915	Knob of mode selectors
7935	Cable Fairlead
7951	Main Switch DP version
7953	Orange Lamp Holders
9707	Bell hose
9719	Feeder Tube for Detergent Pump
9830	Pressure Switch
13105	Magnet Microswitch
13620	Heating Element Cover
13642	Magnet for Hood Type Machine
13725	Temperature Gauge
51054	Nylon O-Ring

Chef Quip Modelo: 25 DP Dis. N° EE.AF.029
 Modelo: 25 DP Data: 17-02-99
 Model: 25 DP Diagrama:




 Model: 25 DP *Me* Dis. N° EM.AF.028
 Date: 28-03-01

Part No.	Description
1056	T-Junction (boiler)
1068	Filling Hose Gasket 12 x 24 x 2.5
1510 now 1511	Booster Pump on machines AFTER 06/
1510 now 1530	Booster Pump on machines BEFORE 06/
1515	Complete Filter for Rinse Aid Dispenser
4122	Tub-drain
4122	Tub Drain
4123	Tub-drain gasket 50x66x3
4124	Ring-nut of tub-drain
4125	Drain elbow hose gasket 34x45x4
4324	Drain Seal
4334	Bushing for wash arms
4353	Lower Spaces for rinsing arm
4355	Rinsing Ring Nut
4362	Column
4364	Sealing Ring
4365	Washing Arm (4325)
4366	Teflon sealing
4368	Drain Connection
4369	Undercolumn
4373	Upper rotary pin
4374	Lower Rotary Pin
4390	Washing Tube
4391	Undercolumn Sealing
4393	Inlet Pipe
4446	Reducer
4496	Boiler
4648	O.R. Gasket 7.66/1.78
4658	T-Junction Tank
4710	Pump 0.75HP
4728	Drain Filter
4751	Drain Pump
4752	Rinsing Arm With Nozzles
4753	Drain Connector
4756	Upper Column
4777	Breather Pipe
4943	Break Tank Overflow Pipe
4973	Intake Filter
4995	Intake Hose Break Tank
5205	Heating Element
5692	Level Switch ATA
7127	Rinsing-jet holder
7128	Slot shaped rinse jet
7129	Nut of Rinsing Jet
7138	Column Gasket AL
7155	Drain Hose 1cm 150 Male fitting+Female
7171	Outlet Hose D 40/50 H 50
7192	Intake Hose
7275	Drain Connection Pipe
7283	Hose from Dispenser to Rinse Aid Tank
7401	Upper Rinsing Tube
7947	Reduction T-Junction
7999	Elbow to Drain Hose
9738	Overflow Pipe
14060	Rinsing Pipe